



Product Catalogue

INDUSTRIAL COMPRESSORS & PROCESS ENGINEERING EQUIPMENT

- **Medium & High Pressure AIR & GAS COMPRESSORS & BOOSTERS**
- **PROCESS GAS COMPRESSORS (Oxygen, Hydrocarbon Gases, Inert Gases, Natural Gas, Toxic Gases).**
(Reciprocating & Diaphragm Type compressors)
- **CNG / BIOGAS COMPRESSORS, BOOSTERS & COMPOSITE MACHINES**
- **MEDICAL & INDUSTRIAL OXYGEN Cylinder filling COMPRESSORS**
- **HYDROGEN GAS COMPRESSORS and FUELING SYSTEMS**
- **AIR SEPARATION PLANTS**

COMPANY PROFILE

JYOTECH is one of India's leading supplier of **INDUSTRIAL COMPRESSORS & PROCESS ENGINEERING EQUIPMENT** as well as **FIRE SAFETY RESCUE & DIVING EQUIPMENT**. Established in 1990, the Company has been offering high quality products adhering to National and International standards to the Industry and Government. An ISO 9001:2015, ISO 14001:2015 and ISO 45001:2018 organization, **JYOTECH** services the Indian market, offering a full range of products from its state-of-the-art manufacturing facilities in North India (**NCR NOIDA**) and from its international business partners.

We have our HO located at Noida (Delhi-NCR) and our factory is located in Greater Noida, industrial hub of Uttar Pradesh.

We customise our compression solutions to meet the customer requirement. Our Industrial compressors are running in **Chemical Plants, Petrochemical Plants, Refineries, Oil & Gas Sector, Steel Plants, Powerplants, Gas Gathering stations, CNG Stations, Industrial Gas Producers & many other relevant sectors.**

Compressors from **5 HP to 2000 HP** are available with us for all gases such as Oxygen, H₂, Vent Gas, Mixed gas, Heavier Hydrocarbon, N₂, Ar, He, CNG, Biogas etc. Our range includes:

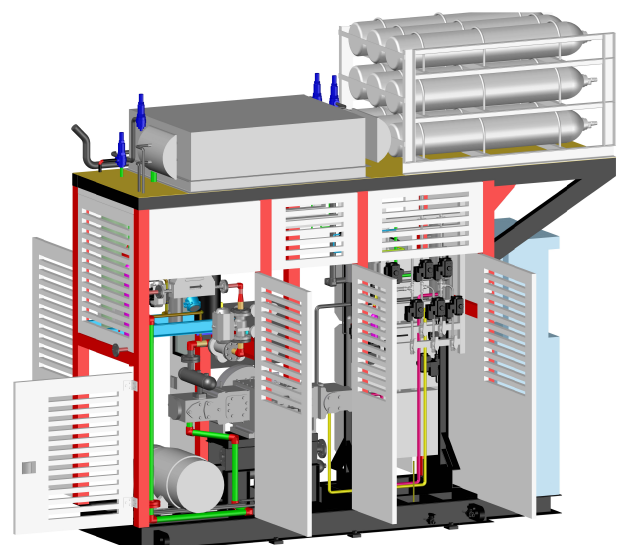
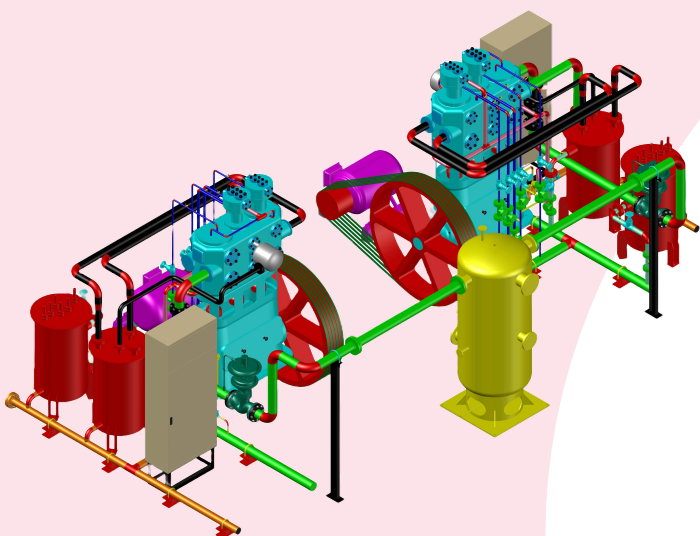
- Medium & High Pressure **AIR & GAS COMPRESSORS & BOOSTERS**
- **PROCESS GAS COMPRESSORS** (Oxygen, Hydrocarbon Gases, Inert Gases, Natural Gas, Toxic Gases. (Reciprocating & Diaphragm Type compressors)
- **CNG / BIOGAS COMPRESSORS, BOOSTERS & COMPOSITE MACHINES**
- **MEDICAL & INDUSTRIAL OXYGEN** Cylinder filling **COMPRESSORS**
- **HYDROGEN GAS COMPRESSORS** and **FUELING SYSTEMS**
- **AIR SEPARATION PLANTS**

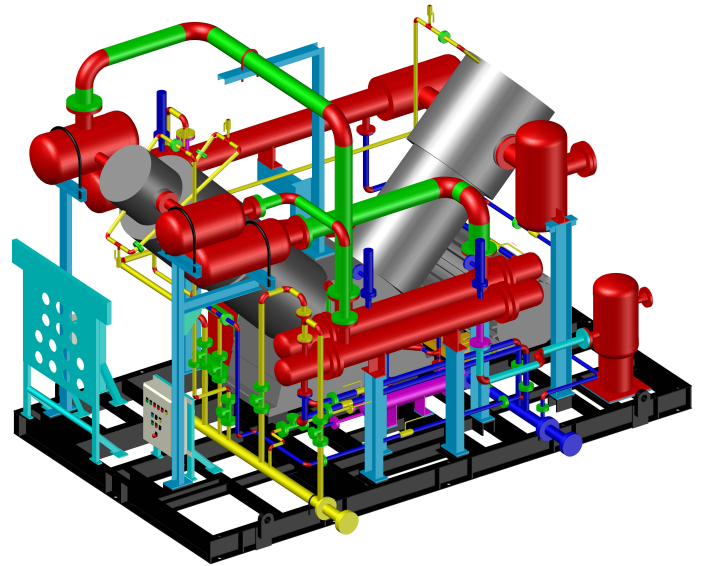
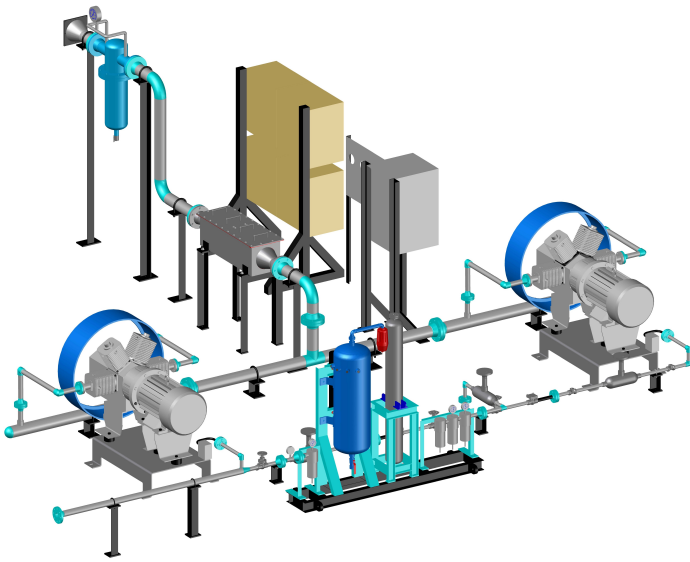
We have **2 modern facilities of over 2000 Sq. m each** to undertake design, engineering, packaging, testing & supply of large range of our compressor solutions.

Company is driven with strong vision of our CEO, Mr. Deepak Bhatia of not just selling compressors but providing the best aftersales experience to our customers.

We have qualified & experienced team at design, engineering, Production & Quality. This is suitably matched by an equally qualified team at Sales & Aftersales.

We use industrial tools like AutoCad & Solidworks in our design & engineering. Industry best engineering practices are followed in all our Compressor packages.



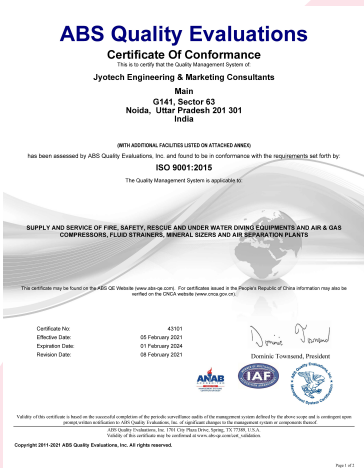


We have the various testing facilities including **Pressure reducing skid for CNG Compressor testing.**

We understand the various industrial standards* in compressor design & safety requirement such as API, ASME, EIGA, EN, BS, IS standards ensuring that compressors are produced as per customers requirement.

*As applicable & as per customer requirement.

JYOTECH is headquartered in NCR NOIDA, having Pan India presence with offices at **MUMBAI, KOLKATA & CHENNAI**. This is further strengthened by our network of Associate Partners / Distributors all over India including neighbouring countries. Our team of professionals have rich experience & skills to provide all types of **Pre-Sales, Technical & After Sales Service Support** including **Supply of Spares & undertaking AMC contracts.**



OXYGEN COMPRESSORS

Type: Reciprocating, Non-Lubricated, water cooled, Vertical / V-Type / W-Type / Horizontal

Capacity Range: Up to 20000 Nm³/hr

Suction Pressure: As per Requirement

Discharge Pressure: Up to 50 Barg

Applicable Standard: Fully designed and manufactured based on maker standard, and API-618 or equivalent global standard with deviations.

Compliance with EIGA standard for cleaning procedure.



PROCESS COMPRESSORS (RECIP.)

Type: Reciprocating, Non-Lubricated/Lubricated, water cooled, Vertical / V-Type/W-Type/ Horizontal

Capacity Range: Up to 25000 Nm³/hr

Suction Pressure: As per Requirement

Discharge Pressure: Up to 1000 Barg

Application: H₂, Hydrocarbon Gases, Natural Gas, BOG, Mixed Gas

Applicable Standard: Fully designed and manufactured based on maker standard, and API-618 or equivalent global standard with deviations.



NATURAL GAS COMPRESSORS (MOTOR & GAS ENGINE DRIVEN)

Type: Reciprocating, Lubricated, Air cooled, Horizontal Balanced Opposed.

Capacity Range: 10000 - 100000 SCMD.

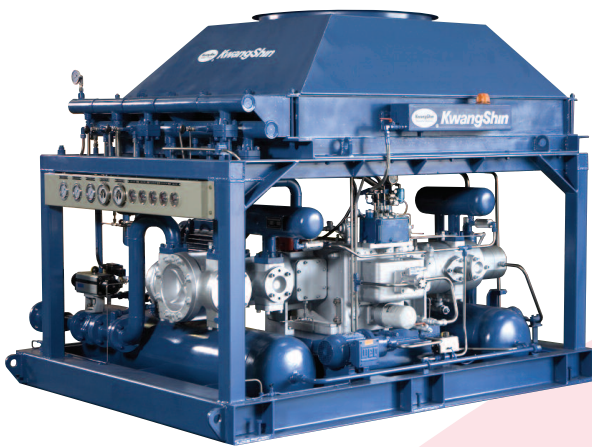
Suction Pressure: As per Requirement

Discharge Pressure: Up to 120 Barg

Application: **Upstream** - Well Head Gas Compressor, Gas Lift Up Compressor and Midstream – Pipeline Booster.

Applicable Standard: Fully designed and manufactured based on maker standard, and API-11P/ ISO13631.

Driver: Gas Engine/ Electric Motor



DIAPHRAGM COMPRESSORS

Capacity Range: 5-500 Nm³/hr
Suction Pressure Range: As per customer requirement
Discharge Pressure Range: 80-850 bar
Power: Up to 200 kW
Application: Suitable for H₂/ O₂/ He/ Argon/ Toxic / Ultra-pure / Rare gases



OXYGEN CYLINDER FILLING COMPRESSORS

Suitable for medical oxygen and other industrial cylinder filling applications. These are Non-Lubricated compressors, so the purity remains same during compression of gas.

Applicable gases: Medical Oxygen
Other gases: CO₂, Hydrogen, CO, N₂, Helium, Argon
Capacity: Up to 260 Nm³/hr
Discharge Pressure: Upto 150 or 200 barg
Type: Non-Lubricated, Reciprocating
Cooling: Open Loop (Cooling Tower) or Closed loop cooling water (Radiator) system



MEDIUM & HIGH PRESSURE AIR & GAS COMPRESSORS & BOOSTERS



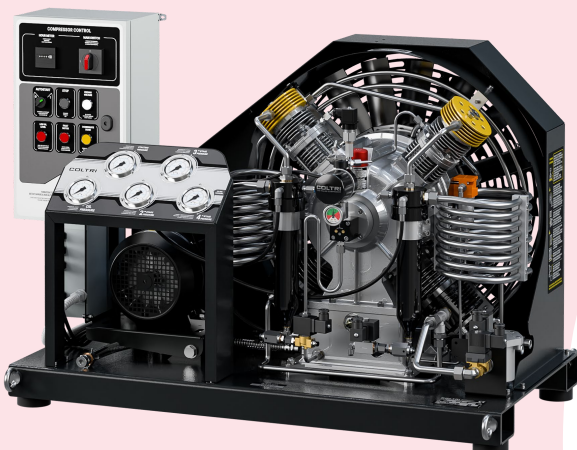
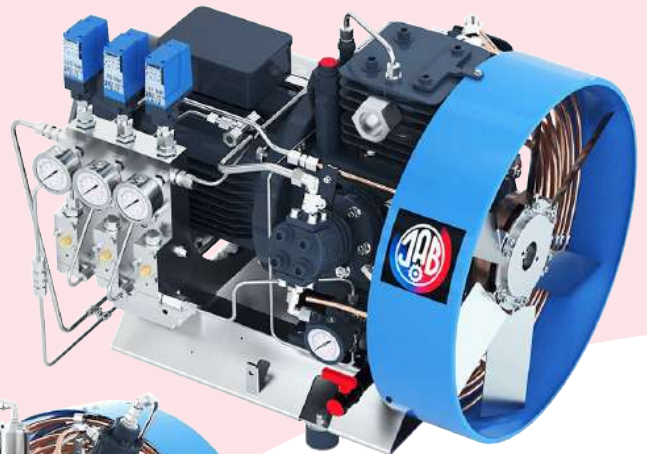
AIR COMPRESSOR used in manufacturing of PET Bottles to blowing out water turbines to moving ball valves in pipelines or generating overpressure in high-voltage switch cabinets, or descaling applications, these compressors have been providing years on service to client satisfaction. The NITROGEN compressors are ideal for supply of gas injection technology test benches or for production of plastic components or in defense manufacturing. Other application is in Steel plants. Our HELIUM compressors are used in test benches, gas injection technology as well as production of plastic components and for helium filling systems. All machines are Air Cooled Lubricated in options of Direct Coupled as well as V-belt driven.

COMPRESSORS

- **Capacity:** Up to 84 m³/hr
- **Suction pressure:** Atmospheric
- **Discharge pressure:** Up to 350 / 420 Barg
- **Motor kW:** Upto 45 kW
- **Applicable Gases:** Air, N₂, He, Natural Gas

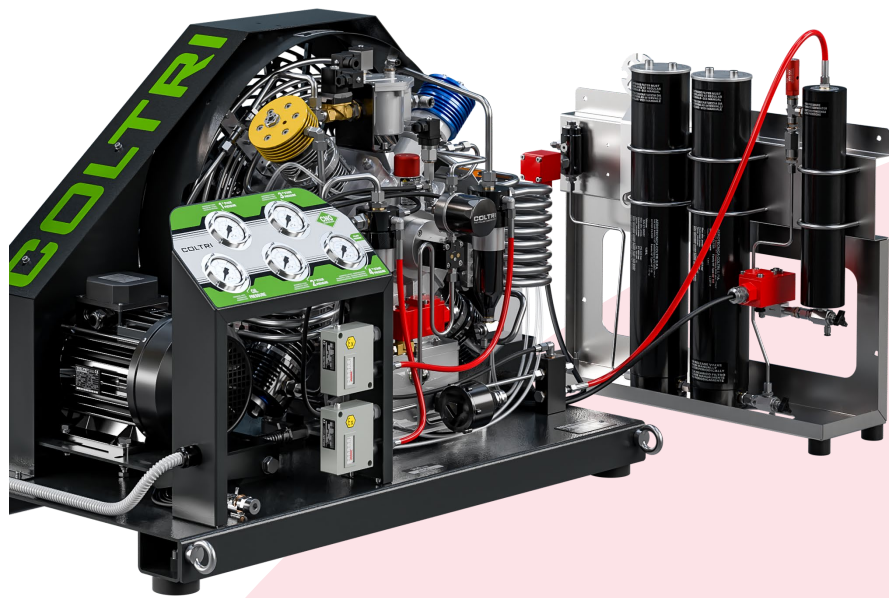
BOOSTERS

- **Capacity:** Up to 600 m³/hr
- **Suction Pressure:** Upto 8 barg
- **Discharge Pressure:** Upto 350 / 420 barg
- **Motor Rating:** Up to 30 kW
- **Applicable Gases:** Air, N₂, He, Argon & Natural Gas



SELF FUELLING COMPRESSORS & BOOSTERS

- Capacity: 3 to 40 m³/hr
- Suction pressure: 17 to 200 mBar (upto 6 bar for boosters)
- Discharge pressure: 200/250 Barg
- Gas Handled: CNG & BioGas
- Smallest Footprint, can be mounted on movable skid for easy movement
- Light Weight & Robust Construction
- Suitable for small to medium scale Plants and housing societies
- Comes with 4.5m hose and NGV1 Nozzle



COMPRESSOR FOR CGD INDUSTRY – FULL RANGE



HYDRAULIC CNG BOOSTERS

For Daughter Booster Stations

- Suction Pressure: from 200 to 30 Barg
- Discharge Pressure: 250 Barg
- Capacity: from 250 to 2300 SCMH
- Motor rating: 22 to 110 KW
- Air Cooled
- PLC based control panel
- Industry best throughput with minimum specific power consumption.
(Average flow 850SCMH with 37 KW motor and 500 SCMH with 22 KW motor)
- Our boosters are rugged in construction, requires low maintenance & thus giving higher uptime.
- CO2 flooding system, Flame & Gas Detectors
- ATEX/ PESO Compliant models



3-IN-1 INTEGRATED PACKAGE UNIT (CCDU)

- Integrated package having Compressor, Storage Cylinders, Priority fill panel, Control panel & Dispenser
- Designed in conformance to API, ISO, ANSI & ASME standards
- Equipped with top mounted Air-cooled heat exchanger.
- Best optimization of space
- Smaller foot prints <5 sqm.
- Least vibration & more stability
- ~ 700 WL capacity type I CNG cascade

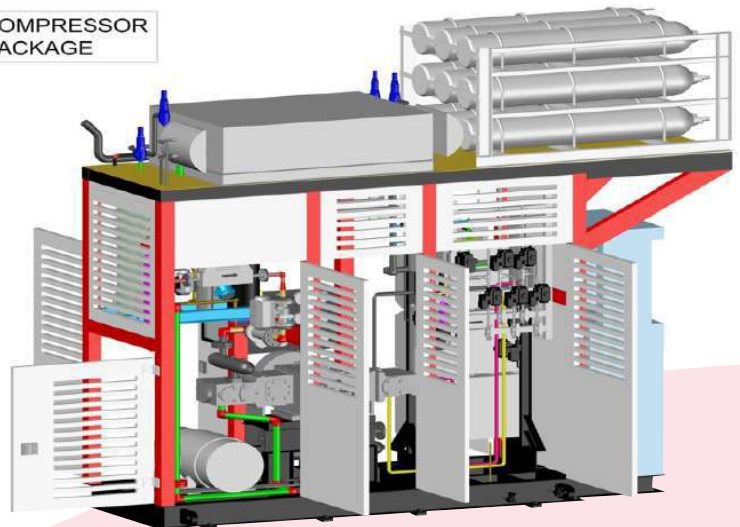
Capacity: 250-600 SCM/H

Driver rating: 37 to 90 kW motor driven

Suction Pressure: 14 to 19 Kg/cm²g

Discharge Pressure: 250 Kg/cm²g

3IN1 COMPRESSOR PACKAGE



COMPRESSOR FOR CGD INDUSTRY – FULL RANGE



ONLINE CUM VARIABLE INLET PRESSURE

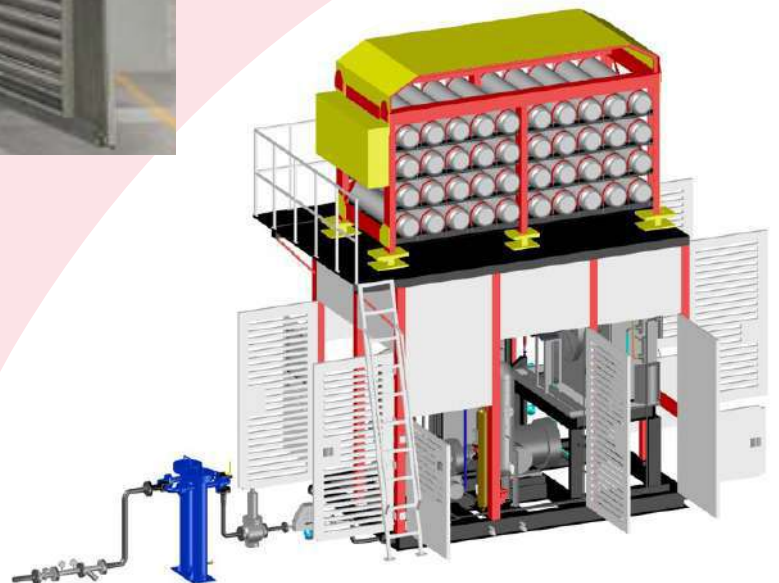
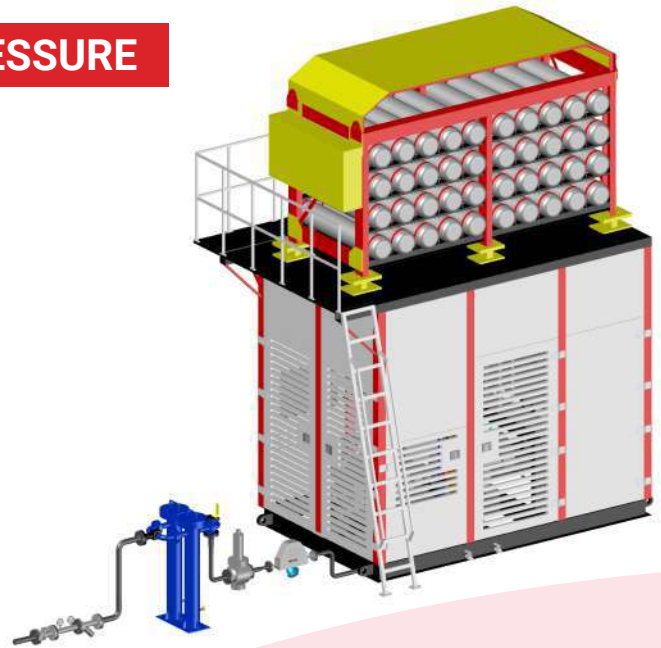
This machine can be used as daughter booster compressor when there is no gas pipeline and later-on can be used as Online Compressor when gas pipe line is available.

Capacity: Upto 1200 SCM/H

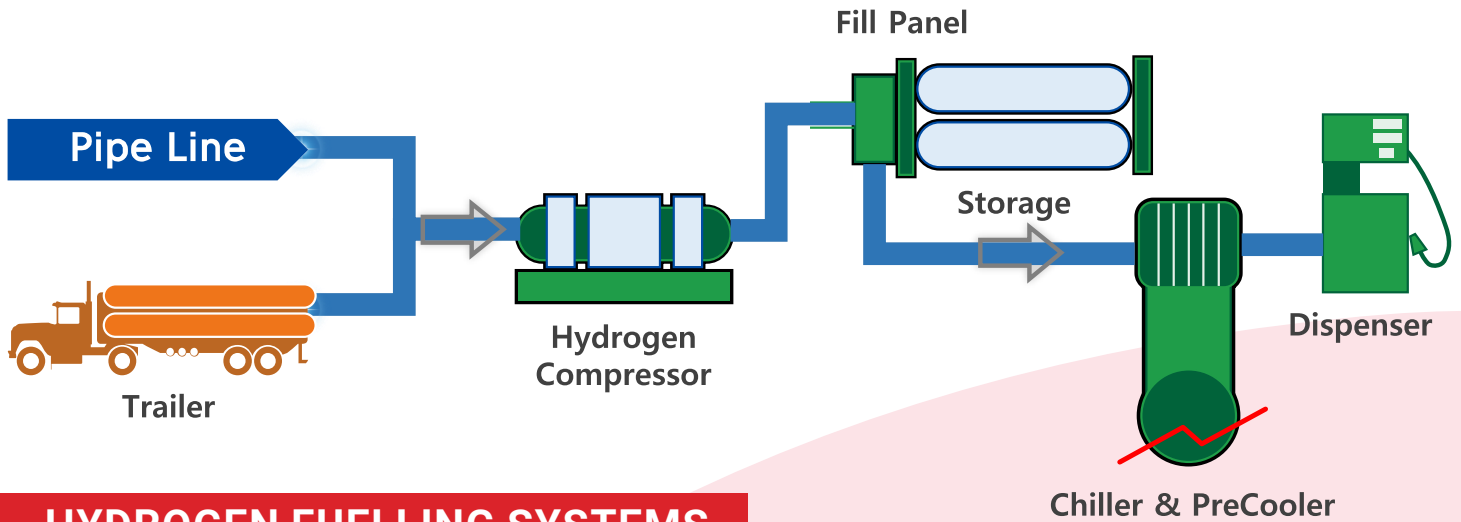
Suction Pressure: 14- 200 barg

Discharge Pressure: 250 barg

Required Horse Power: 120 HP



- 1 HYDROGEN SUPPLYING SYSTEM
- 2 COMPRESSOR
- 3 STORAGE CYLINDER
- 4 CHILLER
- 5 PRE-COOLER
- 6 DISPENSER
- 7 UTILITY
- 8 MONITORING AND POS
- 9 INSTALLATION AND ENGINEERING
- 10 ELECTRIC WORKS
- 11 CIVIL WORKS
- 12 COMMISSIONING AND TRAINING
- 13 A/S & MAINTANANCE



HYDROGEN FUELLING SYSTEMS

- Type:** Quick Fill (Flow Control System)
- Sequence:** Cascade Sequence, Flow Meter, 1 Nozzle & ETC
- Flow Meter:** Hydrogen Mass Flow Meter
- Breakaway:** 300~600N (30.59~61.18Kg)
- Nozzle Type:** 70MPa (TK17 with IR) J2179
- Communication:** 70MPa WIRELESS SAE2799
- Sequence Valve:** 3/8" HYDROGEN VALVE
- Operating Temperature:** -40 ~ 85
- Max Operating Pressure:** 87.5MPa
- Velocity:** SAE J2601
- Safety Device:** Breakaway, Manual Shutoff Valve, Gas Detector
- Hazardous:** Class 1, Division 1,2, Group B
- Cabinet:** Weather Proof type, POWDER COATING



HYDRAULIC PISTON TYPE

H2 Supply	Trailer/LCV
Suction Pr.	30-200 Bar
Discharge Pr.	450/850 Bar
Capacity	25-40 Kg/hr @110 Bar
BHP	90-110 HP



HYDROGEN COMPRESSORS & FUELLING SYSTEMS



HYDROGEN COMPRESSORS

Type: Diaphragm / Hydraulic / Hybrid, Non-Lubricated, water cooled, Horizontal type.
Capacity Range: Up to 700 Nm³/hr
Suction Pressure: As per Requirement
Discharge Pressure: Up to 850 Barg
Motor Rating: Up to 200 kW
Applicable Standard: Fully designed and manufactured based on maker standard



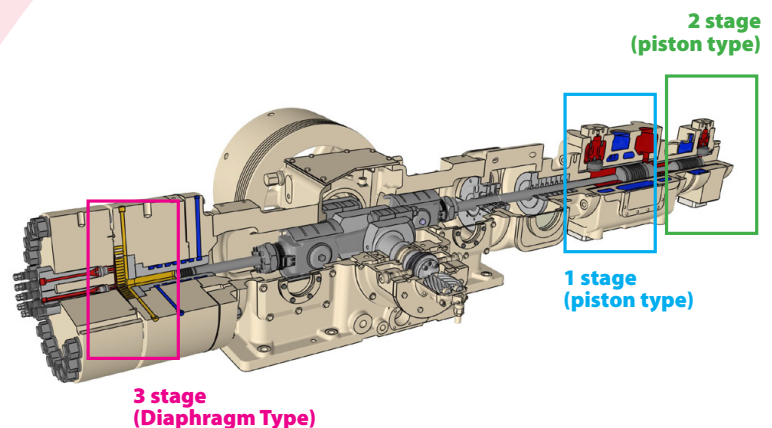
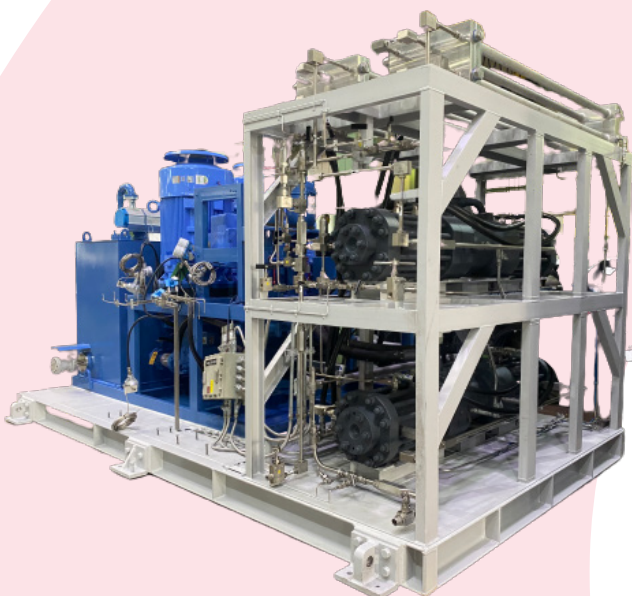
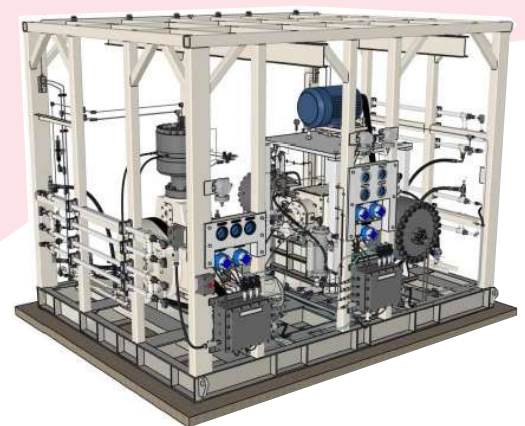
DIAPHRAGM TYPE

H2 Supply	Pipeline	LCV/Trailer
Suction Pr.	20Bar	30-200Bar
Discharge Pr.	80/250/450/850 Bar	250/450/850 Bar
Capacity	35-65 Kg/hr @110 Bar	40-60 Kg/hr @110 Bar
BHP	130-150 HP	90-120 HP



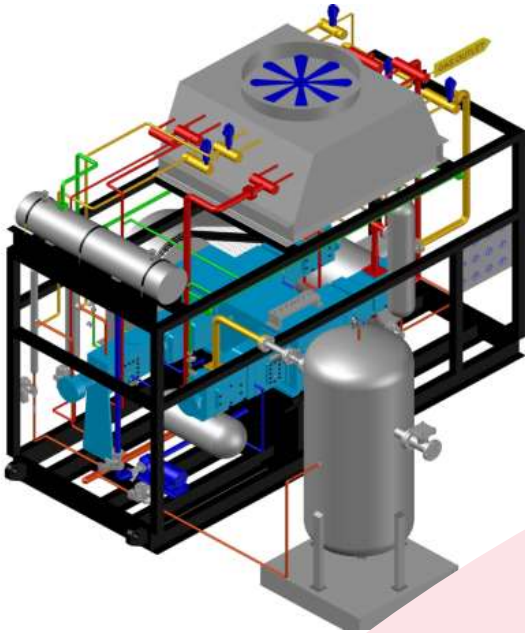
HYBRID TYPE

H2 Supply	Pipeline
Suction Pr.	20Bar
Discharge Pr.	250/450/550 Bar
Capacity	40-65 Kg/hr @110 Bar or as per client reqt.
BHP	110-150 HP



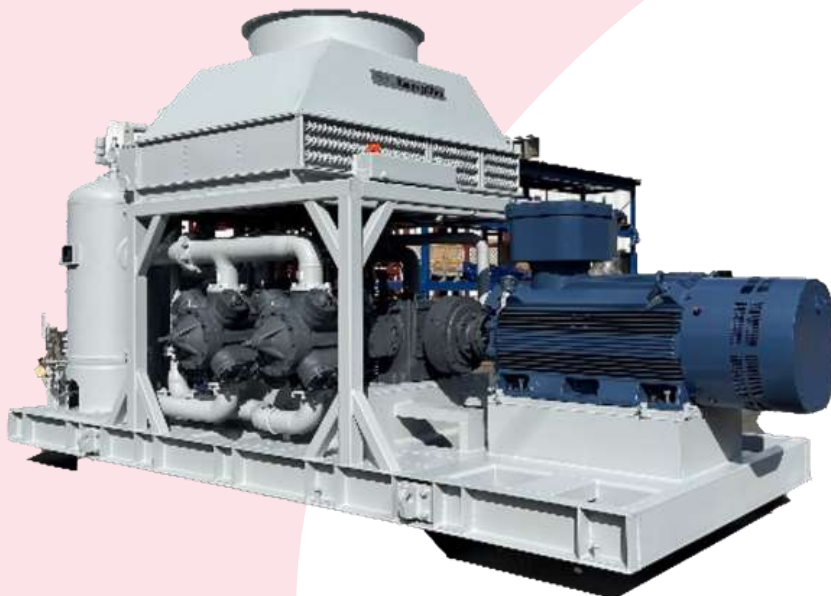
MEDIUM CAPACITY

- Type: Reciprocating, Lubricated, Horizontal Balanced-opposed
- Capacity: 200 to 800 Nm³/hr
- Suction pressure: 0.1 to 0.5 Barg
- Discharge pressure: 250 Barg
- Cooling medium: Closed Loop Cooling Water/Air Cooled/ Water Cooled



LARGE CAPACITY

- Type: Reciprocating, Lubricated, Horizontal Balanced-opposed
- Capacity: 400 to 3000 Nm³/hr
- Suction pressure: 7 to 16 Barg
- Discharge pressure: 250 Barg
- Cooling medium: Closed Loop Cooling Water/ Air Cooled



Some of our valued customers:





JYOTECH ENGINEERING AND MARKETING CONSULTANTS

Regd. Office

H-49 A, KALKAJI
NEW DELHI 110019

Corporate Head-Quarters

G-141, Sector 63, NOIDA - 201301
DISTT. GAUTAM BUDH NAGAR (U.P.)
Tel. : 0120-4711300
Fax : 0120-4711317
Email : sales@jyotech.com

Branch Offices

MUMBAI
KOLKATA
CHENNAI
SINGAPORE

Mumbai

mumbai@jyotech.com

Chennai

chennai@jyotech.com

Kolkata

kolkata@jyotech.com

